

# IECHI



***IE-CHI virtual***

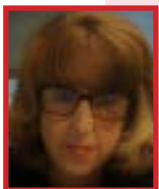
**HEALTH EDUCATION FORUM**  
**Tuesday, September 19, 2023**  
**12pm - 1:30pm**

Hosted by the

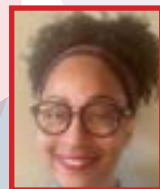
***Inland Empire Community and Health Initiative***

**MEDI-CAL REDETERMINATION:**  
***Ensure Families Continue To***  
***Receive Benefits and Stay Healthy!***

## ***PRESENTERS***



**Rhonda Wolke**  
Regional Manager  
Transitional Assistance  
Department Administration  
San Bernardino County



**Shalaun Jones**  
Director, Member  
Eligibility Strategy  
Inland Empire Health Plan



**Ruthy Argumedo**  
Associate Vice President,  
Growth and Community  
Engagement  
Molina Healthcare of California

**MUST REGISTER IN ADVANCE:**

[https://us02web.zoom.us/meeting/register/  
tZctcOCvrTosHNyfGHOKo2vQdlhX3DaAyN7j#/registration](https://us02web.zoom.us/meeting/register/tZctcOCvrTosHNyfGHOKo2vQdlhX3DaAyN7j#/registration)

Or visit: [www.sbcms.org/events](http://www.sbcms.org/events)