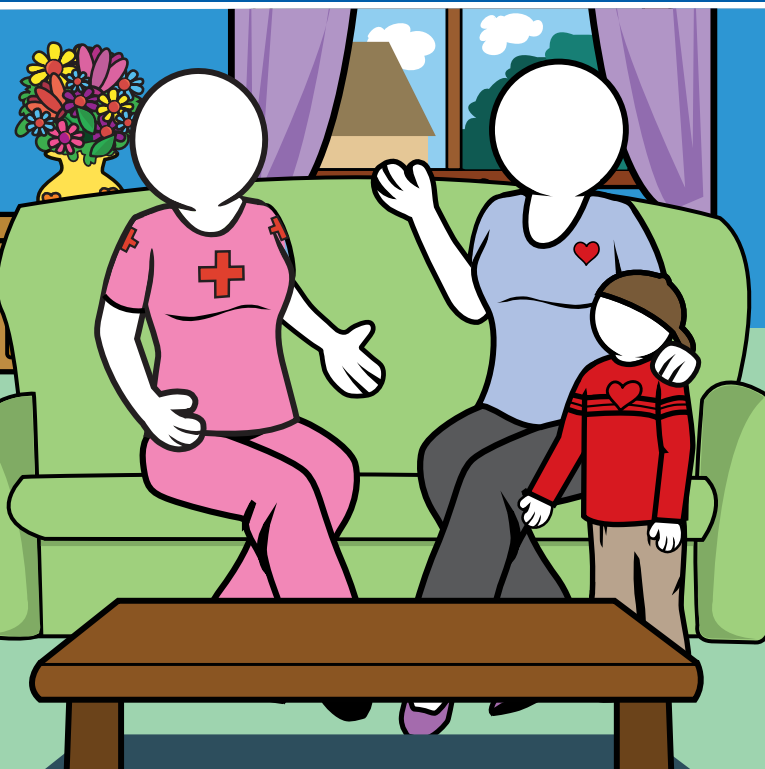


IEHP *MyPath* PROGRAM

If your child is living with an advanced disease, we know there can be stress and fear of the unknown. Our new program, *MyPath*, can ease your mind. Our care team answers your questions about your child's illness and guides you through the treatment process. Having people around you and your child who care is how life should be.

MyPath PROGRAM FOR YOUR CHILD'S QUALITY OF LIFE



WHAT IS *MyPath*?

A program that provides extra support to you and your child to cope with serious medical conditions.

If your child qualifies, *MyPath* may be right when:

- ♥ A health decline occurs
- ♥ Usual treatments are not working or become more challenging
- ♥ More home-based support is needed

Our *MyPath* care team can provide supportive services in your home to address your child's needs:

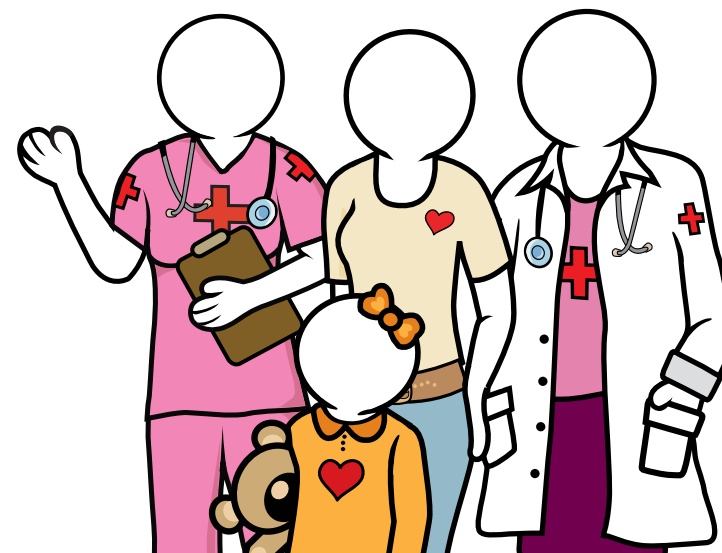
- ♥ Physical
- ♥ Social
- ♥ Spiritual
- ♥ Mental
- ♥ Emotional

With extra support from your care team, your child and family can optimize quality of life and comfort at home.

SUPPORT FOR YOU AND YOUR CHILD

The *MyPath* care team consists of a Doctor, a Nurse, a Social Worker, and other Providers. Your child's Doctor works with other Providers to help:

- ♥ Manage your child's pain and symptoms
- ♥ Answer questions about your child's illness, medicines and treatments
- ♥ Avoid unnecessary Emergency Room visits by providing the necessary health care services at home or in the clinic



EASE YOUR CHILD'S DISTRESS

Get counseling services when your child is feeling down. If needed, a social worker and a chaplain are on hand.

ACCESS MORE SERVICES

Along with full benefits, your child gets more services like:

- ♥ A personal care plan
- ♥ Care coordination
- ♥ Guidance through the medical system

GET NEEDED SUPPORT, 24/7

Your child will never be alone with *MyPath*. The care team offers 24/7 support by phone.

FIND OUT IF YOUR CHILD IS ELIGIBLE

Set up an in-home consultation. After the meeting, we will determine if *MyPath* is right for your child.

GET STARTED

Call IEHP Member Services at the number below or ask your child's Primary Care Doctor for a *MyPath* consultation.

IEHP complies with applicable Federal civil rights laws and does not discriminate on the basis of race, color, national origin, age, disability, or sex. ATTENTION: If you speak a language other than English, language assistance services, free of charge, are available to you. Call 1-800-440-4347 (TTY: 1-800-718-4347). IEHP cumple con las leyes Federales aplicables de derechos civiles y no discrimina por motivos de raza, color, nacionalidad, edad, discapacidad o género. ATENCIÓN: Si habla español u otro idioma diferente al inglés, le ofrecemos los servicios gratuitos de un intérprete de idiomas. Llame al 1-800-440-4347 o al 1-800-718-4347 (TTY). IEHP 遵守適用的聯邦民權法律規定, 不因種族、膚色、民族血統、年齡、殘障或性別而歧視任何人。注意: 如果您使用繁體中文, 您可以免費獲得語言援助服務。請致電 1-800-440-4347 (TTY: 1-800-718-4347)。